

**SECURITY SYSTEM NOTES**

Installing/Service Company \_\_\_\_\_

For Service Call \_\_\_\_\_

**AREA LISTINGS**

Area 1 \_\_\_\_\_ Area 2 \_\_\_\_\_

Area 3 \_\_\_\_\_

**SPECIAL CODES**

"Quick Arm" Digit \_\_\_\_\_ "Partial Arm" Digit \_\_\_\_\_ "Chime" Digit \_\_\_\_\_

**ENTRY / EXIT DELAY TIMES**

Exit Delay Time \_\_\_\_\_ Secondary Exit Delay Time \_\_\_\_\_

Entry Delay Time \_\_\_\_\_ Secondary Entry Delay Time \_\_\_\_\_

Partial Arm Warning Time \_\_\_\_\_

**ARM / DISARM CODES**

Master Code/User #01 \_\_\_\_\_ 02 \_\_\_\_\_ 03 \_\_\_\_\_

04 \_\_\_\_\_ 05 \_\_\_\_\_ 06 \_\_\_\_\_ 07 \_\_\_\_\_

08 \_\_\_\_\_ 09 \_\_\_\_\_ 10 \_\_\_\_\_ 11 \_\_\_\_\_

12 \_\_\_\_\_ 13 \_\_\_\_\_ 14 \_\_\_\_\_ 15 \_\_\_\_\_

**ZONE DESCRIPTIONS**

1 \_\_\_\_\_ 2 \_\_\_\_\_

3 \_\_\_\_\_ 4 \_\_\_\_\_

5 \_\_\_\_\_ 6 \_\_\_\_\_

7 \_\_\_\_\_ 8 \_\_\_\_\_

9 \_\_\_\_\_ 10 \_\_\_\_\_

11 \_\_\_\_\_ 12 \_\_\_\_\_

**THIS MANUAL IS FURNISHED TO HELP YOU UNDERSTAND YOUR SECURITY SYSTEM AND BECOME PROFICIENT IN ITS OPERATION. ALL USERS OF YOUR SECURITY SYSTEM SHOULD READ AND FOLLOW THE INSTRUCTIONS AND PRECAUTIONS IN THIS BOOKLET. FAILURE TO DO SO COULD RESULT IN THE SECURITY SYSTEM NOT WORKING PROPERLY. THIS BOOKLET SHOULD BE KEPT IN AN ACCESSIBLE LOCATION FOR THE LIFE OF THE SECURITY SYSTEM. IF YOU DO NOT UNDERSTAND ANY PART OF THIS MANUAL YOU SHOULD NOTIFY YOUR INSTALLING COMPANY AND ASK FOR THAT SECTION OF THE MANUAL TO BE EXPLAINED FULLY.**

The SECURITY CONTROL CENTER is turned on (Armed) and off (Disarmed) by entering a 4 digit code into the Code Pad Control, which is similar to a telephone code pad. The Code Pad Control includes 12 lights and a built in electronic sounder. These provide specific information relating to the status of the security system which is described in this booklet. Understanding what the lights and sounds mean will help you to easily operate your system.

**SO REMEMBER, READ THE ENTIRE MANUAL, AND, IF POSSIBLE PRACTICE ON THE CODE PAD CONTROL WHILE YOUR PROFESSIONAL INSTALLER IS AT YOUR BUILDING. IF YOU HAVE ANY QUESTIONS ASK YOUR INSTALLING COMPANY.**

**PLEASE KEEP IN MIND THAT THE LEVEL OF SECURITY YOU WILL OBTAIN WITH THIS SYSTEM RELATES SPECIFICALLY WITH TWO MAJOR FACTORS:**

1. The quantity, quality, and placement of security devices attached to this system.
2. The knowledge you have of the security system and how that knowledge is utilized in a weekly test of the complete system.

**YOU SHOULD BE AWARE OF THE FOLLOWING FACTS WHEN PREPARING A SAFETY/SECURITY PLAN FOR YOUR HOME/BUSINESS.**

1. Your security system is an electronic device and is subject to failure or malfunction. Do not rely on it as your single source of security.
2. Your system should be tested weekly.
3. Your system will not work without power.
4. Warning devices will need to be loud enough, wired correctly, and properly placed to provide notification of an alarm event.
5. Smoke and heat detectors may not detect heat and smoke in all situations.
6. Use qualified security professionals to select, install, and maintain your security system.
7. It may be possible to arm the security system without the backup battery connected. Your periodic test should be done with A.C. Power removed to verify the battery is connected and adequately charged.
8. Care should be taken to plug in and properly restrain the A.C. Transformer after testing.

**PLEASE READ THIS ENTIRE BOOKLET CAREFULLY BEFORE OPERATING YOUR SECURITY CONTROL SYSTEM. IF YOU DO NOT UNDERSTAND ANY PORTION OF THIS MANUAL, OR IF YOU HAVE ANY QUESTIONS ABOUT YOUR SYSTEM, CONTACT THE INSTALLING COMPANY LISTED ON PAGE 1 OF THIS BOOKLET.**

## **HOW TO ARM YOUR SECURITY SYSTEM**

To Arm the security system, close all of the protected doors and windows. The green "READY" light on the code pad control will be illuminated when all of the protected zones and sensors are secure. If any of the zones are isolated, a sensor in that zone can be violated without affecting the "READY" light. The security system will not arm if the "READY" light is not illuminated. With the "READY" light on, you may arm the security system with your Master Code or one of the auxiliary codes. Each time a key is pressed on the code pad control, a short tone (beep) will sound. If the code pad beeps three times after a code entry, it is an indication that that code has not been accepted. Press the [#] key (reset) and re-enter a valid code. If the code pad control beeps continuously after code entry, it is an indication that the "POWER" light is off. The code pad sounder can be silenced by re-entering your four digit code. If the "POWER" light is off, you should restore power to the system if possible. When the security system has accepted a valid code, the red "ARMED" light will illuminate indicating that the system has been turned on. If you choose to leave the protected area, you must exit within the exit delay time. If you choose to stay within the protected area, insure that all interior zones which may be tripped by your movement are isolated.

## **HOW TO DISARM YOUR SECURITY SYSTEM**

When you enter the protected area through one of the designated entry/exit doors, the code pad control will sound a continuous tone (beep) for the duration of the entry delay time, or until you enter a valid code. After a valid code has been entered, the red "ARMED" light will turn off, and the tone will stop. The security system is now DISARMED. If a valid code is not entered before the end of the entry delay time, an alarm will occur.

**NOTE: If you incorrectly enter your code, press the [#] key before re-entering your code, as this will reset the code sequence.**

(NOTE: IF THE RED "ARMED" LIGHT IS FLASHING DURING THE ENTRY DELAY, THE ALARM SYSTEM HAS BEEN ACTIVATED IN YOUR ABSENCE. LEAVE THE BUILDING IMMEDIATELY AND CALL YOUR ALARM COMPANY AND/OR THE POLICE.)

## **HOW TO ISOLATE ZONES**

To isolate any of the zones, press [\*], zone number(s) to be isolated (01 thru 08), and [\*]. Zones cannot be isolated or deisolated while the control is armed. When the security system is disarmed, all isolated zones will be deisolated. As isolated zones are not protected, this procedure should only be given to authorized persons. For example, to isolate zone 1, the sequence would be as follows:

[\*] - [0] [1] - [\*]

To isolate zones 1, 5, 7, and 8, the sequence would be as follows:

[\*] - [0] [1] - [0] [5] - [0] [7] - [0] [8] - [\*]

## **QUICK-ARM FEATURE**

If this box is checked, your security system will have the [ ] "QUICK ARM" code programmed. This feature will allow you to arm the security system by pressing one, pre-designated key on the code pad control. This "QUICK ARM" code is for **ARMING ONLY**, and will not disarm the security system. This makes it ideal for a maid code, babysitter code, etc. This code can only be programmed and/or changed by your installing company.

## **PARTIAL ARM ARMING**

If this box is checked, your installing company has selected the "Partial Arm" feature for your security system. "Partial Arm" allows "At Home" system arming for added security. To use this feature, press the selected [ ] key on the code pad control. After 5 seconds the "ARMED" and "PARTIAL" lights on the Code pad Control will be illuminated, indicating that your Security System has entered the "Partial Arm" mode. When selected, the following listed zones will be isolated \_\_\_\_\_, and all other zones will cause the code pad buzzer only to sound for \_\_\_\_\_ seconds before the system siren is activated and the alarm signal is transmitted to a Base Station (if your security system is monitored by a Base Station). This allows you to reset your security system prior to it reaching an emergency stage in the event of an accidental zone violation. To turn this feature off, enter your four digit code at the code pad control. The "Armed" and "Partial" lights on the code pad control will go out and the security system will be in a full disarmed condition.

**AUTOMATIC ARMING OPTION**

If this box is checked, the "Automatic Arming" option has been selected by your installing company. This feature is used to make your system automatically arm itself at a designated time of day if it is not already armed. The code pad will sound a continuous tone for a 50 second time frame before automatically arming. If a valid code is entered during this time frame, the system will not automatically arm. When automatic arming occurs, all zones that are not secure, will become isolated.

**AUTOMATIC ISOLATE OPTION**

If this box is checked, the "AUTOMATIC ISOLATE" feature has been selected by your installing company. With this feature enabled, your security system can be armed with any or all zones violated. Any violated zone which does not return to a normal state by the end of the exit delay time will be automatically isolated. Caution should be used when arming your security system to insure that zones necessary for minimal, or desired protection levels are not violated, and thus isolated from the security system.

**AUTO HOME MODE OPTION**

If this box is checked, the "AUTO HOME MODE" option has been selected by your installing company. With this feature enabled, if you do not wish to have a delay on your entry/exit doors, this can be accomplished by pressing the [\*] key on your code pad while the system is "ARMED". At this time, the "PARTIAL" light will illuminate and there will be no entry delay when the entry/exit doors are opened. Any time the "PARTIAL" light is on and the exit delay has expired, the opening of an entry/exit door will produce an immediate alarm, making this feature ideal when a high level of security is desired, and no authorized entries are anticipated. By pressing the [\*] key again, the "PARTIAL" light will turn off, and an entry delay will be present on designated entry/exit doors.

NOTE: Your installing company may have programmed the "AUTO HOME MODE" option to occur in conjunction with the "AUTOMATIC ISOLATE" feature. In this case, the "PARTIAL" light and the isolated "ZONE" lights will become illuminated at the end of the exit delay. If this occurs, you still have the ability to turn the "AUTO HOME MODE" feature off, and/or on by pressing the [\*] key.

**GROUP ISOLATE OPTION**

If this box is checked, the "GROUP ISOLATE" option has been selected by your installing company. If you wish to isolate all zones designated as "GROUP ISOLATE" zones, you may do so by pressing the [\*] key during the exit delay. Once these zones have been isolated, they will remain isolated until the system is disarmed. Once "GROUP ISOLATE" zones have been isolated, the "AUTOMATIC ISOLATE" option will not take effect for this arming time..

**TURNING ON THE CHIME FEATURE**

If this box is checked, your security system will operate in the "CHIME" mode, allowing the monitoring of pre-designated zones while the security system is not armed. While in the "CHIME" mode, the opening of any of these zones will produce a tone from the code pad control. To activate this feature, press the "CHIME" digit which is noted on page 1 of this manual. Five seconds after pressing this digit, a tone will occur indicating that the "CHIME" feature has been activated. Repeat this procedure to turn the "CHIME" feature off.

**MANUAL CODE PAD PANIC/HOLD-UP ALARM**

If this box is checked, the "MANUAL PANIC/HOLD-UP" option has been selected. When selected, pressing the star [\*] and hatch [#] keys at the same time for one second, will sound a local audible alarm. If your system is connected to a monitoring centre, an emergency report could be transmitted to that centre. These keys should only be pressed in an emergency situation requiring immediate response by law enforcement personnel.

PLEASE NOTE: Some Panic/Hold-up alarms are programmed to be silent at the protected building while reporting an alarm to the monitoring centre. Check with your installing company to determine how your security system will respond to the Panic/Hold-up input.

**MANUAL CODE PAD FIRE ALARM**

If this box is checked, the "MANUAL FIRE ALARM" option has been selected by your installing company. If so, you can activate the steady siren by pressing the [1] and [3] keys at the same time for one second. If your system is connected to a monitoring centre, an emergency report could be sent to that centre. These keys should only be pressed in an emergency situation requiring response by fire department personnel.

**MANUAL CODE PAD MEDICAL ALARM**

If this box is checked, the "MANUAL MEDICAL ALARM" feature has been selected by your installing company. If so, you can activate the auxiliary alarm by pressing the four [4] and six [6] keys at the same time for one second. If your system is connected to a monitoring centre, an emergency report could be sent to that centre. These keys should only be pressed in an emergency situation requiring response by emergency personnel.

**DURESS CODE**

If this box is checked, your security system has a "DURESS CODE" option. If so, this code may be programmed to send a special message to the central monitoring station if you are forced to arm or disarm your security system against your will. Check with your Installing/Service company to see if this option has been enabled for your system.

**TELEPHONE LINE MONITOR**

If this box is checked, your installing company has selected the TELEPHONE LINE MONITOR which will monitor the telephone line that links your security system to the monitoring station. When selected, the loss of this telephone line will flash the "READY" light while giving either immediate, or delayed audible notification by sounding the siren and/or code pad sounder. Check with the installing company listed on page 1 to find out if notification will be delayed or immediate, and what kind of sound will be created in case of a telephone line fault.

**SYSTEM ALARM MEMORY**

If the red "armed" light is flashing during the entry delay, the alarm system has been activated in your absence. Once the alarm system is disarmed, you are able to view the "Alarm Memory" to identify the zone(s) that were in alarm during the last armed cycle. Press the [0] key and wait 5 seconds. The alarmed zone lights will flash for five seconds to indicate they were the last zone(s) to have alarmed on your alarm system. If a zone(s) was isolated while there was an alarm, that zone light(s) will light steady during the five second alarm memory recall. NOTE: IF FURTHER ALARMS OCCUR ON YOUR ALARM SYSTEM, THE PREVIOUS ALARM MEMORY WILL BE REPLACED WITH THE CURRENT ALARM(S).

**PROGRAMMING ARM/DISARM CODES**

Your security system can be armed and disarmed by the Master code (User Code #1) and up to 28 auxiliary codes. All codes must have 4 digits. These Auxiliary codes are individually numbered from 2 to 15 (User code 15 may be reserved for an optional Duress code, see page 5 under "DURESS CODE"). If Auxiliary codes are desired, they must be programmed individually. Only persons knowing the Master code can assign or change auxiliary codes (see programming Auxiliary codes below).

**CHANGING THE MASTER CODE** - The master code is user code #1, and must be referred to by its number. For example, if the Master code is [1]-[2]-[3]-[4] and you want to change it to [5]-[3]-[4]-[2], the sequence would be as follows: Press [\*]-[1]-[#] (this enters programming for user #01), then [1]-[2]-[3]-[4] (the old Master code), then [\*]-[1]-[#], then [5]-[3]-[4]-[2] (new Master code) then [\*]-[1]-[#]. The entire sequence would consist of pressing the 17 keys shown below.

[\*]-[1]-[#] - [1]-[2]-[3]-[4] - [\*]-[1]-[#] - [5]-[3]-[4]-[2] - [\*]-[1]-[#]  
(Code 01) (Master Code) (New Code)

**PROGRAMMING AUXILIARY CODES** - In order to program Auxiliary Codes you must know the Master code. As stated earlier, each auxiliary code has its own unique number from 2 to 15. It is programmed much like the Master Code. For example, to program Auxiliary user code #12, the sequence would be as follows:

[\*]-[1]-[2]-[#] - [5]-[3]-[4]-[2] - [\*]-[1]-[2]-[#] - [6]-[7]-[8]-[9] - [\*]-[1]-[2]-[#]  
(Code 12) (Master Code) (New Code)

**REMOVING AUXILIARY CODES** - To remove an Auxiliary user code, simply program that code with the same code as the master code (01). For example, to remove user code #12, the sequence would be as follows:

[\*]-[1]-[2]-[#] - [5]-[3]-[4]-[2] - [\*]-[1]-[2]-[#] - [6]-[7]-[8]-[9] - [\*]-[1]-[2]-[#]  
(Code 12) (Master Code) (Master Code)

## **RESETTING YOUR SECURITY CONTROL CENTER**

In the event of a system malfunction in the Security Control Center, press the [#] (reset) key on the code pad control. This should reset the code sequence and restore normal operation. If the problem persists, call the service number located on page 1 of this booklet for service.

## **AUDIBLE ALARM SOUNDS**

**FIRE** Steady Siren

**INTRUSION & PANIC** Yelp siren

## **CODE PAD CONTROL LIGHT INDICATORS**

**ARMED** RED: On when system is armed; off otherwise. Blinks as alarm memory if alarm was activated during arming cycle.

**READY** GREEN: On when all zones are secure and/or isolated and the system is ready to arm; off otherwise. Blinks for communicator trouble.

**PARTIAL** RED: On when "Partial Arm" is on; off otherwise.

**POWER** RED: On when AC power is on; off otherwise. Blinks when the system standby battery is low.

**ZONES** YELLOW: Blinking means unsecure. Steady means isolated. Off means secure.

## **CODE PAD CONTROL TONES (BEEPS)**

A sounder is built into the code pad control and may sound for one of the following reasons:

- Beeps for all keypresses.
- Sounds a continuous tone during the Entry delay time, or Partial Arm delay time.
- Pulses when a dayzone is violated while the system is disarmed.
- Pulses when a FIRE zone has a trouble condition.
- Pulses when the armed status changes and the AC power is off.
- Beeps 3 times for trying to arm with the "READY" light off, if "AUTOMATIC ISOLATE" has not been selected.
- Beeps 1 second for the "CHIME" feature.
- Beeps 1 second at the end of the exit delay.
- Beeps to indicate telephone line fault if selected.

When pulsing, the code pad sounder may be silenced by entering a valid code. The arm/disarm state of your system will not change when entering a code to silence a pulsing code pad sounder.

## **EMERGENCY EVACUATION PLANS**

An emergency evacuation plan should be established for an actual fire alarm condition. For example, the following steps are recommended by the National Fire Protection Association and can be used as a guide in establishing an evacuation plan for your building.

Draw up a floor plan of your home. Show windows, doors, stairs, and rooftops that can be used for escape. Indicate each occupant's escape routes. Always keep these routes free from obstruction.

Determine two means of escape from each room. One will be the normal exit from the building. The other may be a window that opens easily. An escape ladder may have to be located near the window if there is a long drop to the ground below.

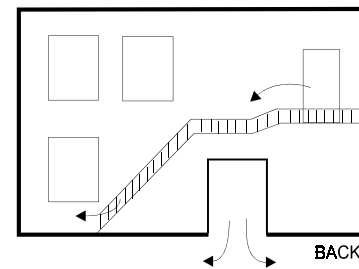
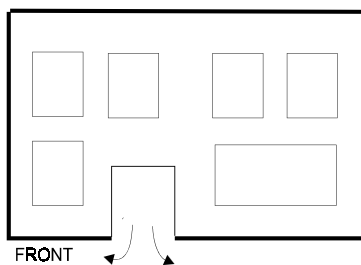
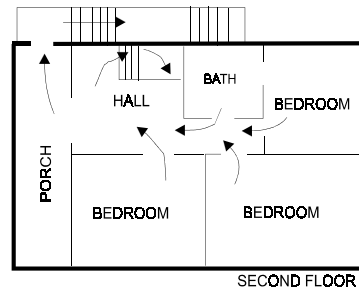
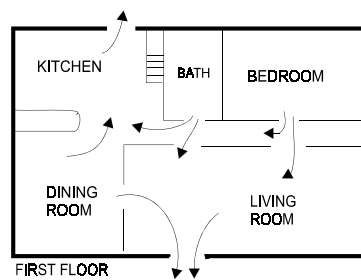
Set a meeting place outdoors for a headcount of the building occupants.

Practice escape procedures. In a home, sleep with bedroom door closed; this will increase your escape time. If you suspect fire, test the door for heat. If you think it is safe, brace your shoulder against the door and open it cautiously. Be ready to slam the door if smoke or heat rush in. Practice escaping to the outdoors and meeting in an assigned spot.

NOTE: After the installation of your Security System has been completed, notify your local Fire and Police Departments to give them your name and address for their records.

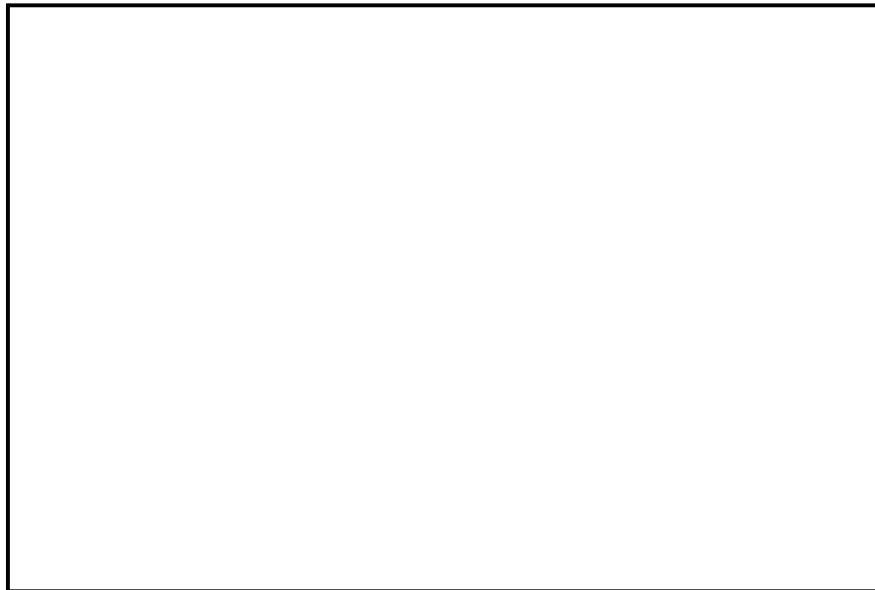
Early warning fire detection is best achieved by the installation of fire detection equipment in all rooms.

The following are examples of evacuation plans. A plan unique to your home or business should be drawn and memorized by each occupant.





**FOR SERVICE, CONTACT:**



**DL250 USERS MANUAL  
DL250UC98 REV C (05/15/98)**